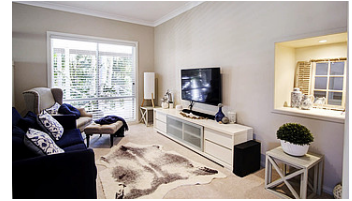


Guide \$599,000 to \$649,000



Modern Home with S/C Flat and Lake Views!



With an extensive list of features complimented by a versatile and spacious floor plan that could accommodate 2 families, this beautifully presented property with it's lake views, wrap around verandah and private, semi-tropical setting next to a reserve will 'tick all the boxes' for home or holidays.

Includes:

- An inviting, open plan living and dining that leads onto the lake-view verandah
- New Kardean flooring and carpets throughout
- Modern kitchen with new gas cooktop and electric oven
- Master bedroom with ensuite and walk in robe
- 4 bathrooms (total), including a large main bathroom with bath
- Formal lounge/TV area, media room/home office (NBN connected)
- Heating and cooling with multiple split cycle AC units
- Versatile (and huge) games/gym/rumpus with built in spa
- SEPARATE 'guest accommodation' with 1/2 bedrooms, living area and kitchen
- Large 7.7m wide x 6.4m garage plus a super storage/workshop with screened gates
- Palm studded, established paths and gardens with abundant parrots/birdlife

Set within a 100m stroll of the lakes edge (access through reserve), 2 minutes drive to Smiths Lake boat ramp and 10 minutes to Pacific Palms pristine beaches, this substantial and stylish property is *must see real estate*.

Please call Mark Lawson on 6554 0600 and Greg Hope 6554 0666.

Features:

- Formal Lounge
- Separate Dining
- Balcony
- Air Conditioning
- Built-In Wardrobes
- Garden
- Secure Parking
- Polished Timber Floors

Contact the agent

Mark Lawson

Ph: 02 6554 0600

Mob: 0409 247 050

mark@pacificpalmsignature.com